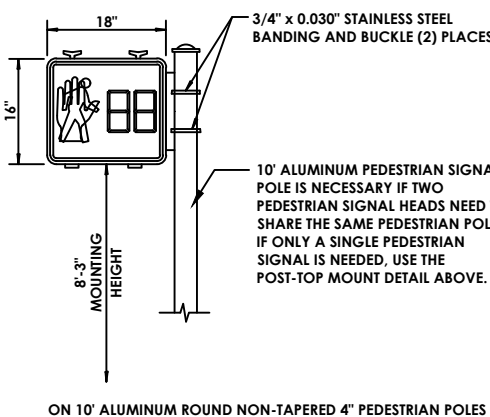
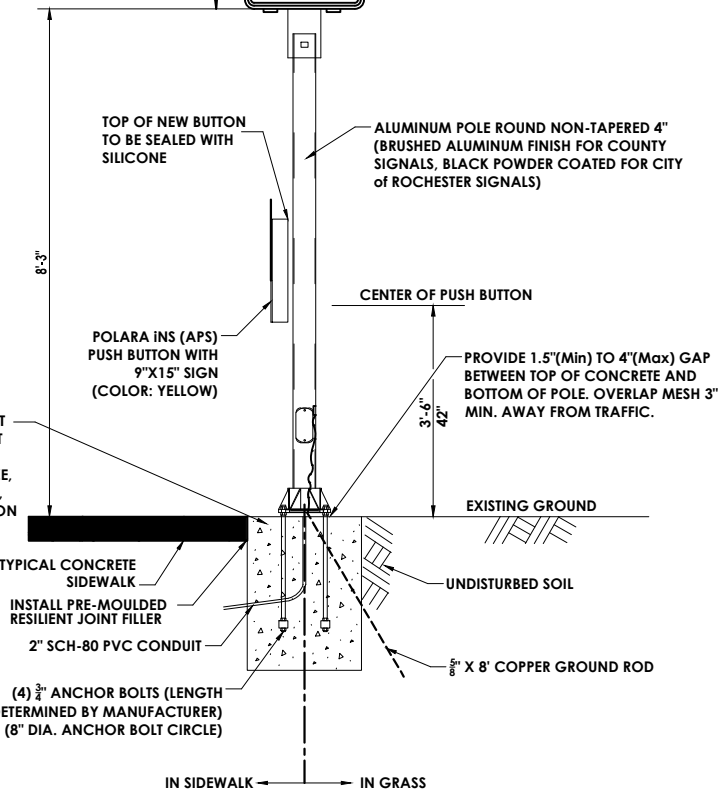
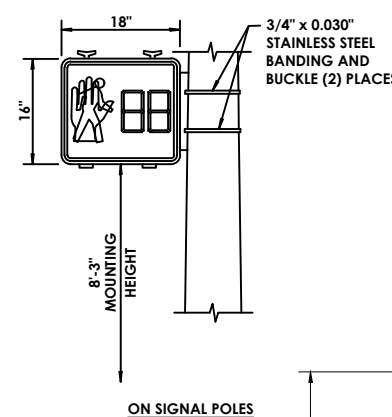


CLAMSHELL PEDESTRIAN SIGNAL BRACKET MOUNT
MCDOT DETAIL - REV. 3/4/2015

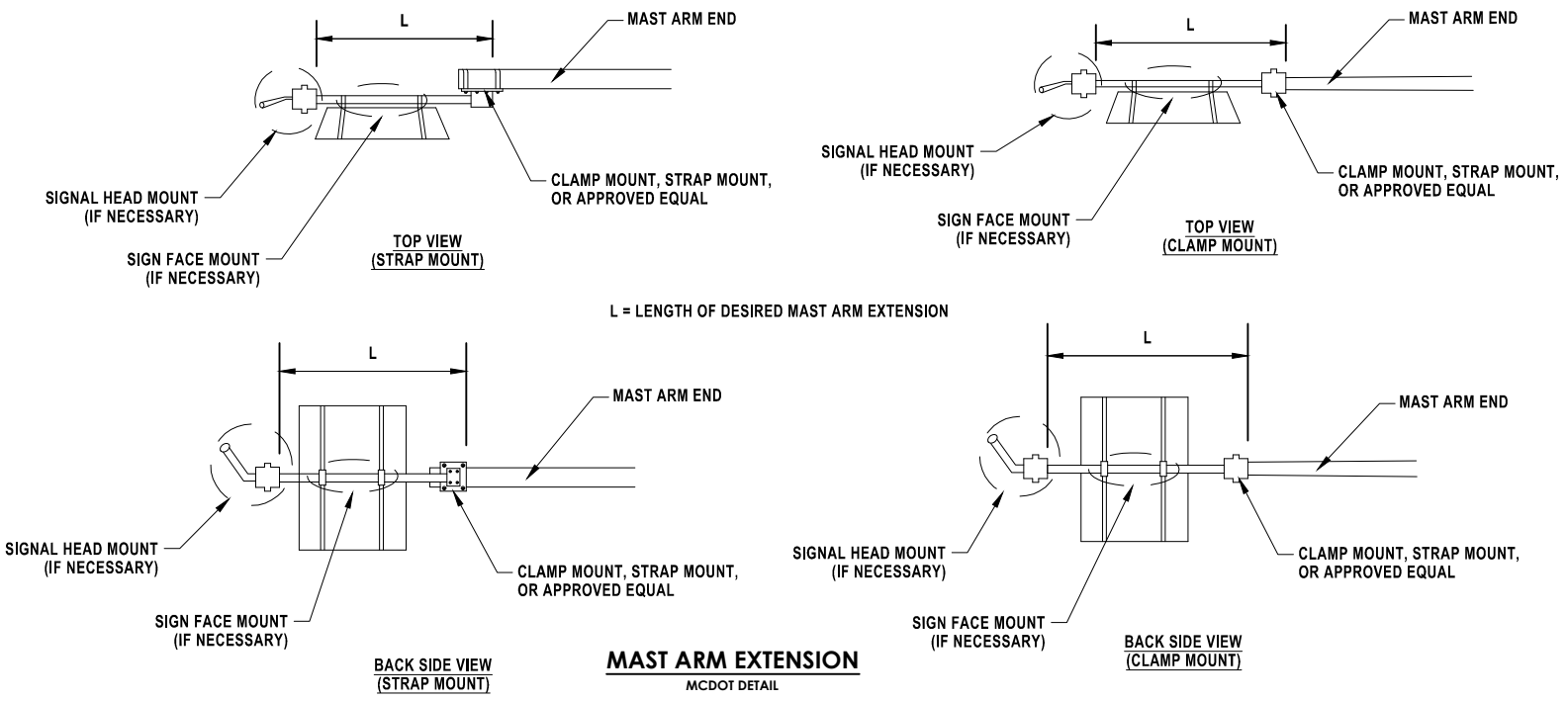
- NOTES:
- STEEL SPACER UNITS (QTY. 2) TO BE USED WHEN FASTENING TO TAPPED HOLE OR WHEN LAG SCREWS USED (WOOD POLE) SO THAT HEX HEAD OF BOLT CAN BE SERVICED WITH HEX SOCKET.
 - CONDUIT ENTRANCE OPTION. ICC P/N 4825 PROVIDES TAPPED 1/2" CONDUIT ENTRANCES BOTH LEFT OR RIGHT SIDES FOR EXTERNAL ENTRANCE TO CLAMSHELL.



CLAMSHELL PEDESTRIAN POLE-SIDE INSTALLATIONS
MCDOT DETAIL - REV. 9/18/2025

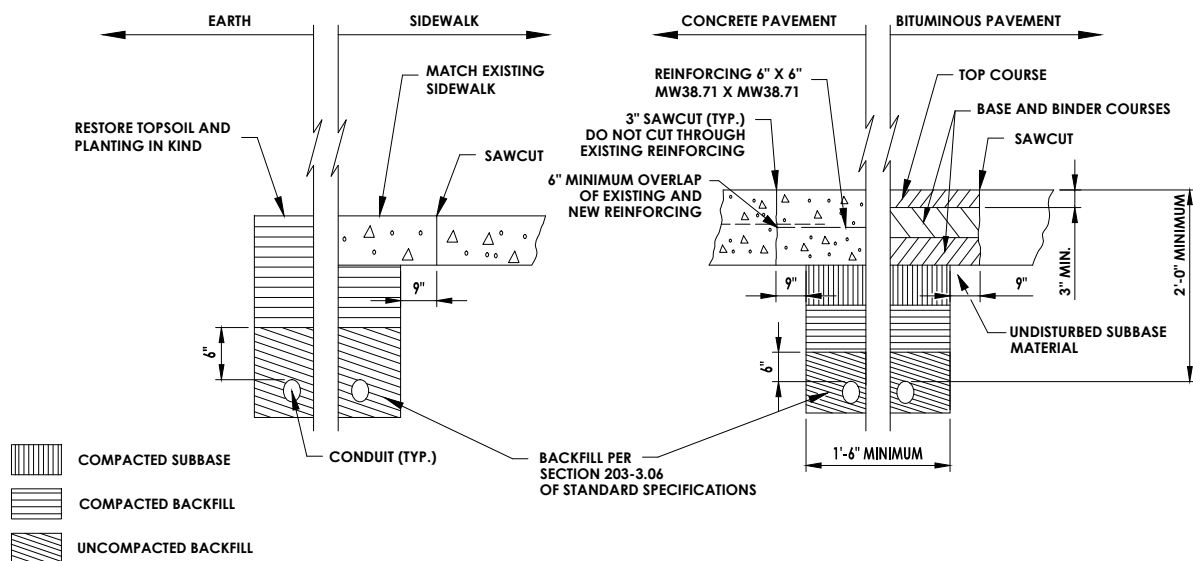


ALUMINUM PEDESTRIAN POLE - 8' POST-TOP MOUNT
MCDOT DETAILS - REV. 9/18/2025



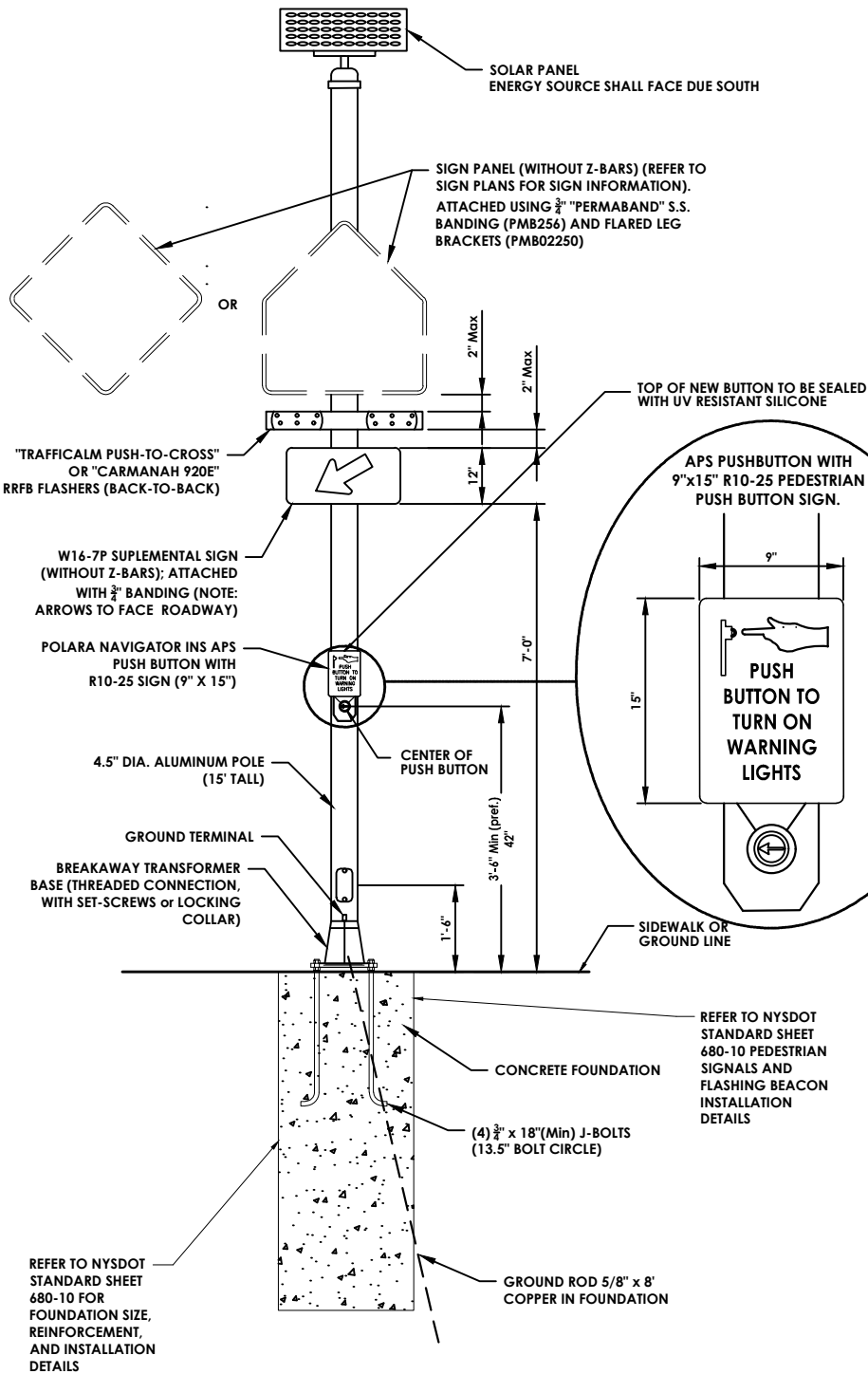
MAST ARM EXTENSION
MCDOT DETAIL

- NOTES:
- FOR EXISTING MAST ARM CONNECTIONS, EXTENSION SHALL BE INCLUDED IN MAST ARM CALCULATIONS USING MCDOT "MAST ARM MOMENT CALCULATOR."
 - MAST ARM EXTENSION CONNECTION SHALL BE CLAMP MOUNT, STRAP MOUNT, OR APPROVED EQUAL BY MCDOT.
 - LENGTH "L" SHALL BE LONG ENOUGH TO ACCOUNT MCDOT GUIDANCE FOR APPROPRIATE SPACING OF SIGN, SIGNAL, OR BOTH.

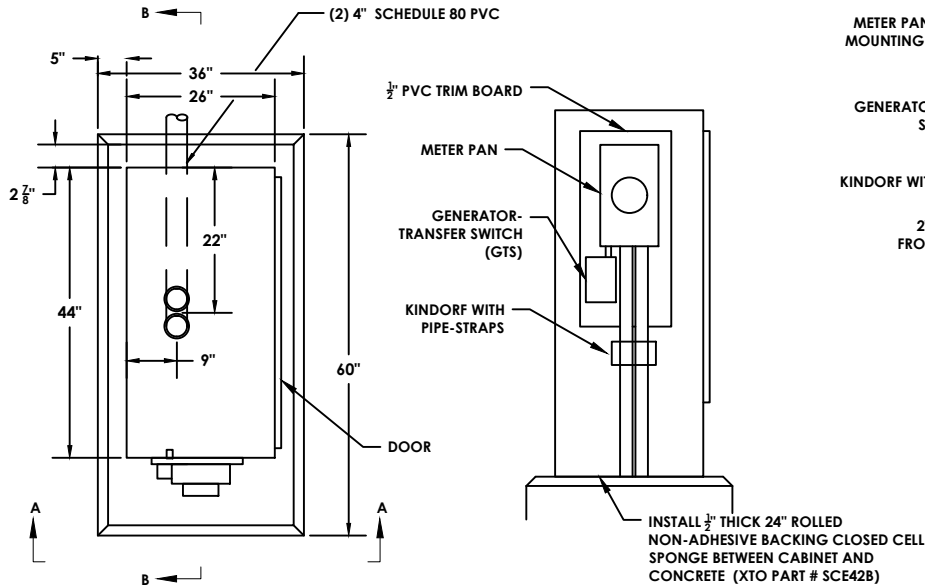


CONDUIT EXCAVATION, BACKFILL AND PAVEMENT REPLACEMENT
MCDOT DETAIL - REV. 9/18/2025

CONSULTANT		PROJECT NAME		COUNTY ROAD	
Consultant Address Rochester, New York XXXX		LIMITS		#	
(585) 867-5309 Fax: (585) 867-5309		PROJECT LIMITS		TOWN	
PROJECT MANAGER: MANAGER		TOWN		CAPITAL PROJECT NO.:	
DRAWN BY: DRAFTER		TOWN		XXXX-XX	
NO DATE BY:		TRAFFIC SIGNALS		SCALE: NOT TO SCALE	
REVISION		DATE ISSUED: DATE		DRAWING NO.	
		2 OF X			

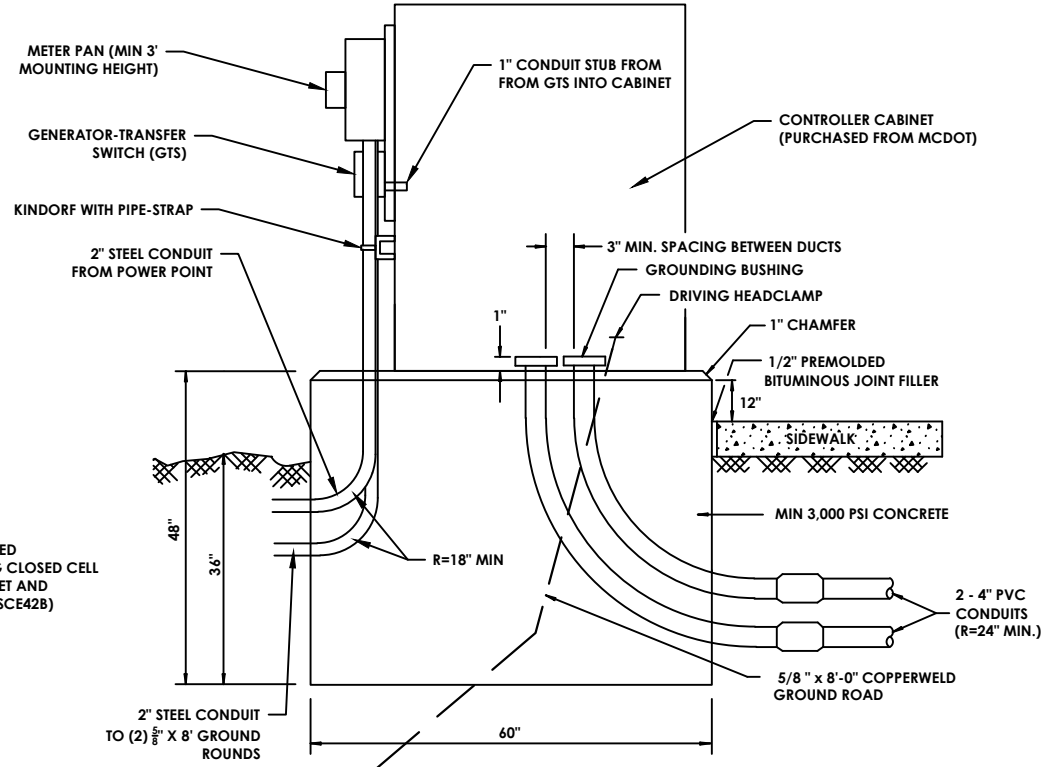


SOLAR RAPID RECTANGULAR FLASHING BEACON ASSEMBLY (RRFB)
MCDOT DETAIL - REV. 9/18/2025



CONCRETE CONTROLLER BASE (CABINET, METER, AND DISCONNECT)
MCDOT DETAIL - REV. 7/15/2024

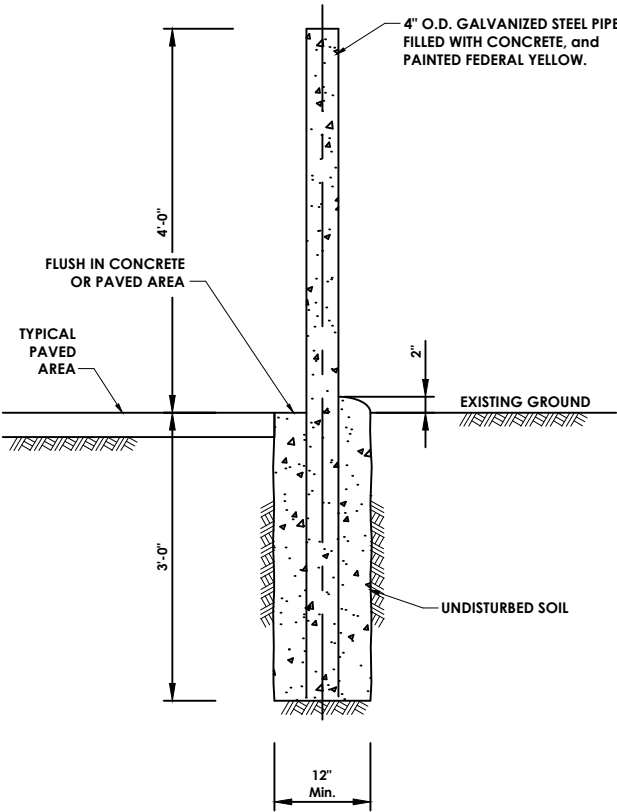
VIEW A-A



NOTES:

1. IN UNPAVED AREAS A MIN. 5' X 5' X 4" CONCRETE WORK PAD SHALL BE PLACED IN FRONT OF THE CABINET DOOR. (COST TO BE INCLUDED IN ITEM 680.5002)
2. CONCRETE EXPANSION JOINT MATERIAL (1/2" X 4" (MIN)) SHALL BE PLACED BETWEEN THE WORK PAD AND THE CABINET BASE.
3. TWO 5/8" X 10' COPPERCLAD GROUND RODS AS REQUIRED FOR GROUNDING SYSTEM GROUND RODS TO BE INSTALLED 6' FROM METER AND 10' FROM APART (FACING DOOR OF CABINET).

VIEW B-B



NOTES:

1. BOLLARDS SHALL BE A MIN 12" AWAY FROM TRAFFIC SIGNAL CABINET.
2. CONSULT MCDOT FOR FINAL FIELD PLACEMENT

STEEL BOLLARD
MCDOT DETAILS - REV. 6/10/2024

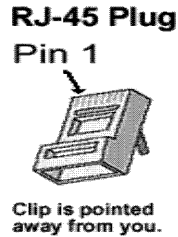
MCDOT STANDARD FOR INTERSECTION and COMMUNICATION WIRING

MCDOT DISCONNECT WIRING GUIDE FOR SPAN WIRE INTERSECTIONS		
Terminal Number	Conductor Color	Indication Type
1	BLACK	Left Turn Green
2	BLUE	Left Turn Yellow
3	GREEN	Green Ball
4	ORANGE	Yellow Ball
5	RED	Red Ball
6	BLACK/WHITE	Left Turn Green
7	BLUE/BLACK	Left Turn Yellow
8	GREEN/BLACK	Green Ball
9	ORANGE/BLACK	Yellow Ball
10	RED/BLACK	Red Ball
11	BLACK/RED	Left Turn Green
12	BLUE/WHITE	Left Turn Yellow
13	GREEN/WHITE	Green Ball
14	ORANGE/RED	Yellow Ball
15	RED/WHITE	Red Ball
16	WHITE/RED	Neutral
17	WHITE/BLACK	Neutral
18	WHITE	Neutral
ANY REMAINING CONDUCTORS ARE SPARES		

MCDOT WIRING GUIDE FOR MAST ARM INTERSECTIONS	
Conductor Color	Indication Type
RED	Red Ball
ORANGE	Yellow Ball
GREEN	Green Ball
BLACK	Green Left Turn
BLUE	Yellow Left Turn
WHITE	Neutral
ANY REMAINING CONDUCTORS ARE SPARES	

ETHERNET RJ-45 PLUG WIRING GUIDE	
WHITE/ORANGE	1
ORANGE	2
WHITE/GREEN	3
BLUE	4
WHITE/BLUE	5
GREEN	6
WHITE/BROWN	7
BROWN	8
Version: (B) ON RJ-45 CRIMPER	

MCDOT WIRING GUIDE FOR PEDESTRIAN INDICATORS and PUSH BUTTONS	
Conductor Color	Indication Type
RED	Don't Walk
GREEN	Walk
WHITE	PED Enclosure Neutral
BLACK	Push Button Power
ORANGE	Push Button Neutral
ANY REMAINING CONDUCTORS ARE SPARES	



NOTE(s): All Spare wires in the "MCDOT DISCONNECT WIRING GUIDE FOR SPAN WIRE INTERSECTIONS" table should be landed to the "DISCONNECT TERMINAL BLOCK". All Spare wires in the "MCDOT WIRING GUIDE FOR MAST ARM INTERSECTIONS" table should be taped up with electrical tape and identified as "SPARE". All Spare wires in "MCDOT WIRING GUIDE FOR PEDESTRIAN INDICATORS and PUSH BUTTONS" table should be taped up with electrical tape and identified as "SPARE". When making up an RJ-45 ethernet plug work from "Left to Right" with the plug clip facing away from you, this will place "Pin 1" on the left side of the RJ-45 ethernet plug.

CONSULTANT		DEPARTMENT OF TRANSPORTATION		COUNTY ROAD	
Consultant Address Rochester, New York XXXX		50 WEST MAIN STREET, SUITE 6100 ROCHESTER, NEW YORK 14614-1231		#	
(585) 867-5309 Fax: (585) 867-5309		UNAUTHORIZED ALTERATION OR ADDITION TO THIS DRAWING IS A VIOLATION OF THE NEW YORK STATE EDUCATION LAW ARTICLE 145, SECTION 729b		PROJECT NAME	
PROJECT MANAGER: MANAGER		CAPITAL PROJECT NO. XXXX-XX		LIMITS	
DRAWN BY: DRAFTER				PROJECT LIMITS	
NO DATE BY:				TOWN	
				TRAFFIC SIGNALS	
				SCALE: NOT TO SCALE	
				DATE ISSUED: DATE	
				DRAWING NO.	
				3 OF X	

1. POLES SHALL BE ADJUSTED BY USE OF THE LEVELING NUTS ON THE ANCHOR BOLTS SO THAT THEY ARE VERTICAL WHEN ALL SIGNAL HEADS AND SIGNS ARE INSTALLED.
2. ANCHOR BOLTS - MAX ONE ANCHOR BOLT DIAMETER AND MIN. 2 EXPOSED THREADS.
3. POLES SHALL BE LOCATED NO CLOSER TO THE ROADWAY OR CURB THAN THE LINE OF FIXED OBJECTS IN THE IMMEDIATE AREA AND IN NO CASE LESS THAN 3' FROM THE ROADWAY OR CURB.
4. BEARING SURFACE OF HOLE SHALL BE UNDISTURBED GROUND OR COMPACTED SOIL. IF A FORM IS REQUIRED OR PRECAST BASE IS USED, IT SHALL BE AS A.O.B.E.. POLE FOUNDATION MAY BE REQUIRED TO BE NARROWED AND DEEPENED TO AVOID EXISTING UTILITIES IN SPECIFIC LOCATIONS. ALLOWANCE FOR ANY ADJUSTMENT NECESSARY TO BE INCLUDED IN PRICE BID FOR POLE FOUNDATION.
5. LANE DESIGNATION SIGNS SHALL BE CENTERED ON THE TRAVEL LANES.
6. THE 4-SECTION HEADS WITH FLASHING YELLOW ARROWS (IF PRESENT) SHALL BE LOCATED TO THE LEFT OF THE " LEFT TURN ONLY " SIGN.
7. ANY MAST ARMS LONGER THAN 40' WILL REQUIRE A NYSDOT-APPROVED VIBRATION MITIGATION DEVICE TO BE INSTALLED (COST TO BE INCLUDED IN PRICE BID FOR THE MAST ARM) AS DEPICTED.
8. ALL MAST POLE AND ARM COVERS AND BASE MESH TO BE INSTALLED WITHIN 24 HOURS OF INSTALLATION AND MAINTAINED.

1. TOP OF SIGNAL HEAD ATTACHMENT POINT TO BE SEALED WITH SILICONE TO PREVENT WEATHER INTRUSION.
2. CORD CONNECTOR OR STRAIN RELIEF REQUIRED WHERE CABLE ENTERS THE DISCONNECT HANGER.
4. DRIP LOOP TO BE SECURED TO OVERHEAD CABLE WITH ELECTRICAL TAPE TO PREVENT MOVEMENT DURING WEATHER.

U-BOLT CLAMP
N.T.S.

MCDOT DETAIL - REV. 9/30/2025

MCDOT DETAIL - REV. 9/30/2025